



1. CUT ME

LOCATIONS TROPICAL HOUSES



HOW TO SHOOT... LOCATIONS

Digital
Camera

3. KEEP ME!

TROPICAL HOUSES

Tropical climate houses have an abundance of plants, flowers and trees to photograph.

- **Wide-angle shot**
Shoot an area with lots of vegetation to make it look like somewhere in the Amazon rain forest or a desert climate.
- **Control the aperture**
A wide-angle lens has plenty of depth of field, so you might only need f/5.6 to get everything in focus.
- **If the shutter speed drops**
Aim to keep it over 1/50 sec, but if there isn't enough light, open the aperture to f/4 and increase the ISO to 400.



Don't change lenses inside the tropical house. It's hot and steamy, so just use a zoom.

Wendy Evans

ACTION CARS AND TRAILS



HOW TO SHOOT... ACTION

Digital
Camera

CARS AND TRAILS

KIT CHECKLIST...

24-50mm focal length, polariser

FOR YOUR FIRST SHOT, TRY...



TIPS FOR GETTING A GREAT SHOT...

- Sit at the back of your car, use manual focus and press fire when there's a car behind you on a street with neon lights.
- Use a circular polariser and rotate it to remove internal reflections off the back window. Also, clean your windows first.

Alamy



If the car behind is moving at a similar speed, there will be enough detail registered during the shot.

MACRO HOLLY LEAVES



HOW TO SHOOT... MACRO

Digital
Camera

HOLLY LEAVES

KIT CHECKLIST...

105mm macro or 100-200mm telephoto

FOR YOUR FIRST SHOT, TRY...



TIPS FOR GETTING A GREAT SHOT...

- Frame the photo so that there are colourful leaves receding into the background as they go out of focus.
- Use an f/4 aperture for a shallow depth of field, focusing on key leaves, or stop down to f/16 for more depth.

Wendy Evans



Unless there is no breeze at all, it will be difficult to do any focus stacking as the leaves will move.



1. CUT ME

GET CREATIVE STOP MOTION



2. FOLD ME

HOW TO SHOOT... GET CREATIVE

Digital
Camera

3. KEEP ME!

STOP MOTION ANIMATION

Make your own Wallace & Gromit animation this Christmas, with your digital camera.

- **Construct the set**
Whether it's plasticine figures on a 3D set or pieces of fruit on card, you will first need to construct and light up the set.
- **Use Manual mode**
Take a meter reading from the setup and then switch to Manual mode so that all the photos have the same exposure.
- **Frames per second (fps)**
The fps is how many photos you need to take per second of action and how smooth the result looks. Aim for 10fps.

Alamy



You don't need 48MP raw files for each photo. Use jpeg and 1920 x 1080 for Full HD resolution.

ARCHITECTURE REFLECTIONS



HOW TO SHOOT... ARCHITECTURE

Digital
Camera

REFLECTED BUILDINGS

Approach architecture in a creative way by shooting buildings in watery reflections.

- **Types of shot**
The reflection is the key element, so exclude the building from the shot and use the surroundings of the reflection.
- **Focus on the reflection**
Adjust the focus so that the reflection of the building, and not just the surface of the water, is in sharp focus.
- **Abstract or precise**
Shoot a disturbed surface for an abstract reflection or a still surface for precise detail, but ensure it looks like a reflection.

Alamy



Use an aperture of f/5.6 and a wide enough angle focal length to encompass the reflection.

WILDLIFE WINTER OWLS



HOW TO SHOOT... WILDLIFE

Digital
Camera

WINTER OWLS

Owls are active throughout winter and can even be seen out in snowy conditions.

- **Keep it quiet**
Once in position, stay still and keep quiet. Owls use their excellent hearing to locate rodents under the snow.
- **Lock your focus**
Falling snow can confuse focus tracking, so if your camera supports it, lock the focus onto the owl when it is in view.
- **Focus and shutter speed**
You need a fast shutter speed, so open the aperture and set the shutter speed to 1/1,000 sec or faster in manual.

Getty

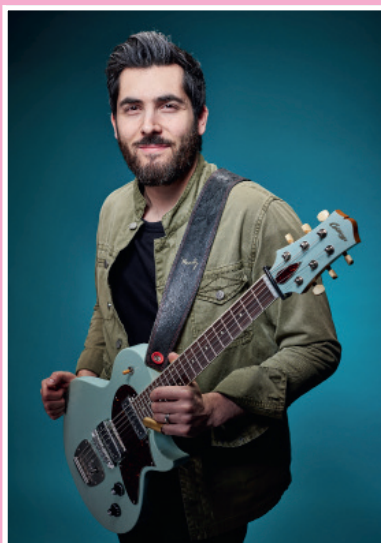


With manual settings, set the ISO to Auto for extra sensitivity if the light isn't quite bright enough.



1. CUT ME

PORTRAITS SOLO MUSICIANS



2. FOLD ME

HOW TO SHOOT... PORTRAITS

Digital
Camera

3. KEEP ME!

SOLO MUSICIANS

KIT CHECKLIST...

28mm lens, 50/85mm portrait lens

FOR YOUR FIRST SHOT, TRY...



TIPS FOR GETTING A GREAT SHOT...

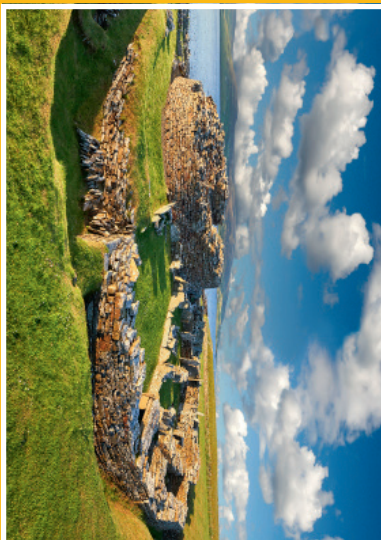
- Use a wide-angle lens and get close up to exaggerate both the features and the musical instrument of the subject.
- Or use a portrait lens with a wide aperture and stand as far back as you need to get a distortion-free shot of the musician and their gear.



For front-to-back sharpness, focus on the eyes and use a narrower aperture, such as f/6.3.

Olly Curtis/Bass Guitar Magazine

LANDSCAPES IRON AGE VILLAGES



HOW TO SHOOT... LANDSCAPES

Digital
Camera

IRON AGE VILLAGES

Discover the remnants of how people lived thousands of years ago.

- **Lead-in lines**
A pathway or series of standing stones can be used to lead the eye towards the circular hut structures.
- **Go wide, big foreground**
Use an 18mm focal length and focus a couple of metres into the scene with an f/8 aperture for depth and sharpness.
- **Going underground**
If there is a subterranean element, use Highlight metering, increase the ISO to 800 and use a wide aperture.



Try different types of shots, including ones that show the whole of the Iron Age village.

Getty/Paul Williams/Funkystock

ACTION SNOWBOARDING



HOW TO SHOOT... ACTION

Digital
Camera

SNOWBOARDING

KIT CHECKLIST...

50-300mm focal length

FOR YOUR FIRST SHOT, TRY...



TIPS FOR GETTING A GREAT SHOT...

- Capture the snowboarder hitting some loose snow. Open the aperture to get a fast shutter speed and fill the frame.
- An alternative shot is to get underneath a jump (or sideways to it), but with the boarder facing you as they jump.



Track the snowboarder coming down the slope or pre-focus on the spot where they jump and wait.

Alamy